

JFK ASSASSINATION SYSTEM
IDENTIFICATION FORM

AGENCY INFORMATION

AGENCY : INSCOM/CSF
RECORD NUMBER : 194-10012-10139
RECORDS SERIES : DOD-AFFILIATED PERSONNEL AND INCIDENT INVESTIGATIONS
AGENCY FILE NUMBER : ZF000003W - PAGES 249-254

DOCUMENT INFORMATION

ORIGINATOR : USA
FROM :
TO :
TITLE : APPENDIX "B"
DATE : 00/00/00
PAGES : 6
SUBJECTS : SLOVODA, VLADIMIR

PARTICULARS OF MANUFACTURING INSTALLATIONS IN BAUTZEN
AND SUNDRY LOCATIONS

LOWE FACTORY

EFA PHANOMEN WERK 3

DOCUMENT TYPE : PAPER, TEXTUAL DOCUMENT
CLASSIFICATION : ~~CONFIDENTIAL~~ Release in Full
RESTRICTIONS : 1B, 2
CURRENT STATUS : POSTPONED IN FULL
DATE OF LAST REVIEW : 03/20/95
OPENING CRITERIA :

COMMENTS : THE REVIEW BOARD VOTED THAT THIS DOCUMENT IS NOT
BELIEVED RELEVANT TO THE ASSASSINATION OF PRESIDENT
KENNEDY.

**
**
W
I
T
H
D
R
A
W
A
L
* *
C
A
R
D
* *

Released under the
John F. Kennedy Assassination
Records Collection Act of 1992
(44 USC 2107 Note)
By AKW Date 11/1/17

~~CONFIDENTIAL~~

- 19 -

Appendix 'B'

PARTICULARS OF MANUFACTURING INSTALLATIONS IN
BAUTZEN and sundry LOCATIONS

1. (a) LOWE Factory

DONNELL worked in this factory firstly as an apprentice mechanic making tools and studying lock construction, and then as a turner for heavy items, i.e. railway coach wheels, from July 1954 to May 1955. He gave the following particulars:-

SITUATION :- AMS Series M 841, Sheet 4852
BAUTZEN MR 589690

LOWE Products :-

Passenger carriages, railway goods and tipper wagons, refrigerator wagons and coach building for omnibuses. Sidelines were furniture, prams and metal household goods.

Production rate:-

Passenger carriages - SEVEN per week
Tipper wagons - THREE per day
Goods wagons - FIVE per week.
Refrigerator wagons - FOUR per week

EXPORTS:-

RUSSIA - Passenger carriages, goods wagons,
tipper wagons, refrigerator wagons.
TURKEY, BULGARIA,
ALBANIA and MEDITERRANEAN COUNTRIES - refrigerator
wagons

Probably goods wagons are being sent to EGYPT according to information heard from worker friends after he had left.

SABOTAGE:-

For three or four months while DONNELL was there, seats in the passenger coaches were being slashed in large quantities very frequently, causing considerable damage, loss of production and money.

PERSONNEL

Approx 3,000.

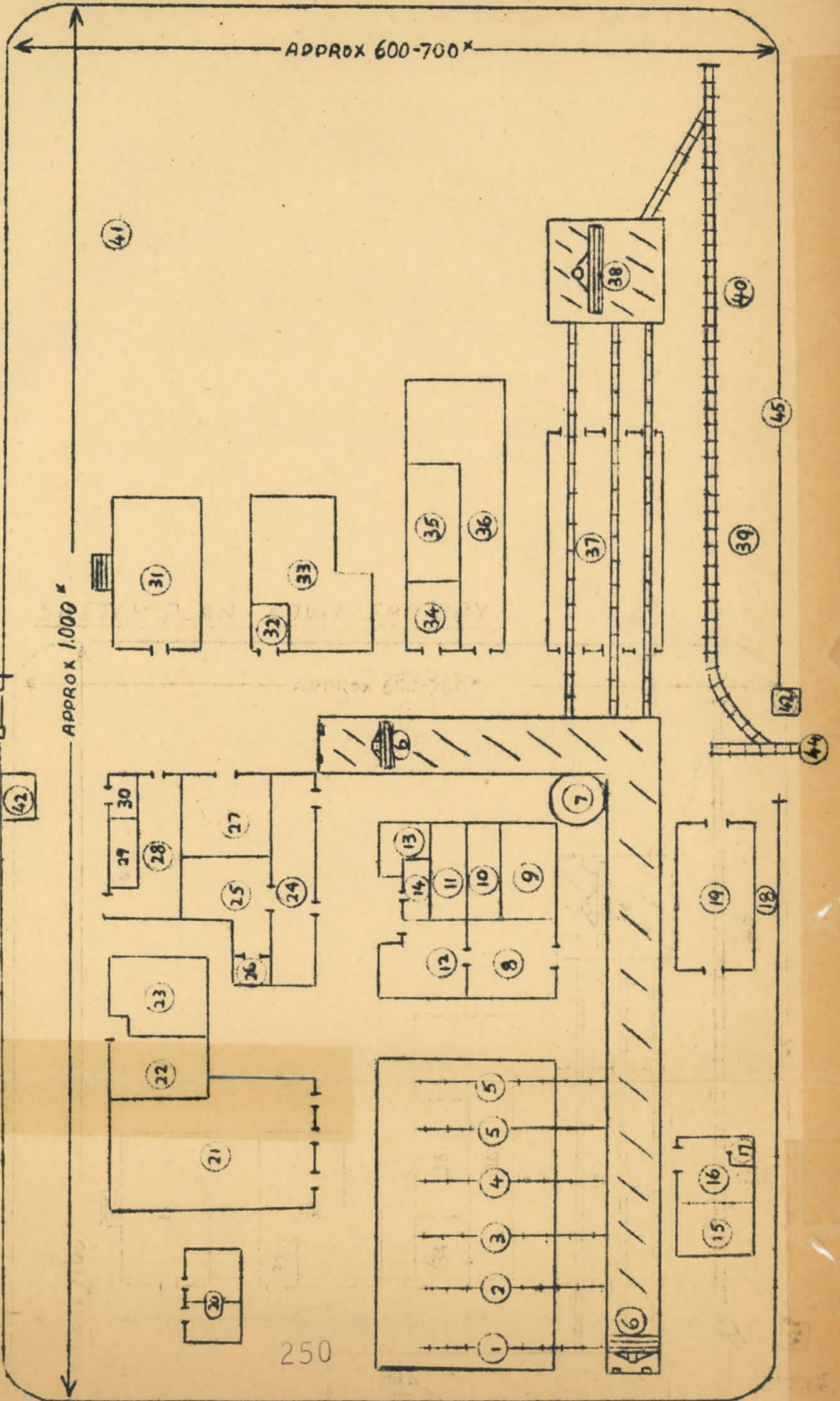
The above particulars were known by DONNELL as at Mar/Apr 55, and to the best of his knowledge there has been no appreciable change.

249

~~CONFIDENTIAL~~

~~CONFIDENTIAL~~

SKETCH PLAN - LOWE FACTORY



~~CONFIDENTIAL~~

~~CONFIDENTIAL~~

LEGEND for SKETCH PLAN OF
LOWE FACTORY

- 1) Here the metal plates are cut ready for use in building the passenger coaches, etc.
- 2) Building of wagon and carriage chassis.
- 3) Construction of wagons
- 4) Shed for building woodwork on wagons and carriages
- 5) Bus trailers are built here
- 6) Large gauge transporter railway for moving products from one workshop to another.
- 7) Turntable for moving products from one transporter railway to the other.
- 8) Workshop for making small parts
- 9) Furniture workshop
- 10) Upholstery and carpentry department
- 11) Repairs
- 12) Welding department
- 13) Works telephone exchange
- 14) Wash room
- 15) Prams department
- 16) Additional workshop for work on express passenger carriages.
- 17) Allied defectors apprentice workshop
- 18) Metal raw materials
- 19) Machine room for cutting of raw materials
- 20) Bathrooms for men and women
- 21) Turning workshop for making carriage wheels, etc
- 22) Dining hall
- 23) Kitchen
- 24) FDJ Workshop
- 25) FDJ
- 26) Laboratory
- 27) Medical Centre
- 28) Drawing Office
- 29) "HO" Department store/shop
- 30) "KONSUM" department store/shop
- 31) General Office (pay, correspondence, etc)
- 32) Records of personnel
- 33) Foundry
- 34) Tool Store
- 35) School and lecture room
- 36) Carpenters' Shop
- 37) Painting and finishing touches on wagons carriages, etc done here
- 38) Transporter railway from 37) to railway leading to BAUTZEN sidings
- 39) Coal dump
- 40) Wood piles
- 41) Coal dump
- 42) Gate control huts manned by Works police. Visitors have day pass system. Workers have special passes
- 43) River SPREE
- 44) Railway to BAUTZEN sidings and FABRIKSTR.
- 45) 7' high fence made of barbed wire strands 4" apart, and topped by a roll of barbed wire. Floodlights are spaced approx every 25 yards. Perimeter is patrolled by Works Police and dogs.

~~CONFIDENTIAL~~

1. (b) EFA PHANOMEN KRAFTFAHRZEUGWERK SITTAU, WERK 3 BAUTZEN

DONNELL worked in this factory as a general repair mechanic - repairing sewing machines, electric saws, boring machines, turning machines and sundry other repairs, from May 55 to Jul 55. He gave the following particulars:-

SITUATION :- AMS Series M 841, Sheet 4852
BAUTZEN MR 594693

EFA Products:-

EFA GRANIT 3 ton trucks (military? & civilian type)
EFA GRANIT 4 ton trucks (Military? and civilian type)
PHANOMEN 3 ton trucks (military type?)
(MK 3?) 18 cwt trucks (military type)
FERNWAGEN (radio trucks) (military type?)
PHANOMEN 18 seater omnibuses (military? & civilian type)

Production Rate:-

PHANOMEN omnibuses 2 to 3 per day
GRANIT 3 and 4 ton trucks } 10 to 12 per day
PHANOMEN 3 ton trucks }

This programme alternated approx every two months with:-

(MK 3?) 18 cwt trucks 18 to 20 per day

There was also a constant production of:-

FERNWAGEN 4 per week.

EXPORTS

GRANIT 3 and 4 ton trucks and PHANOMEN buses (possibly military type) were at first being exported to TURKEY and are now going to EGYPT.

SABOTAGE:-

At werk 4 (MR 595689) used as a storage dump for werk 3, there was a fire in JUNE 55 which was suspected as sabotage. No great damage was done.

PERSONNEL

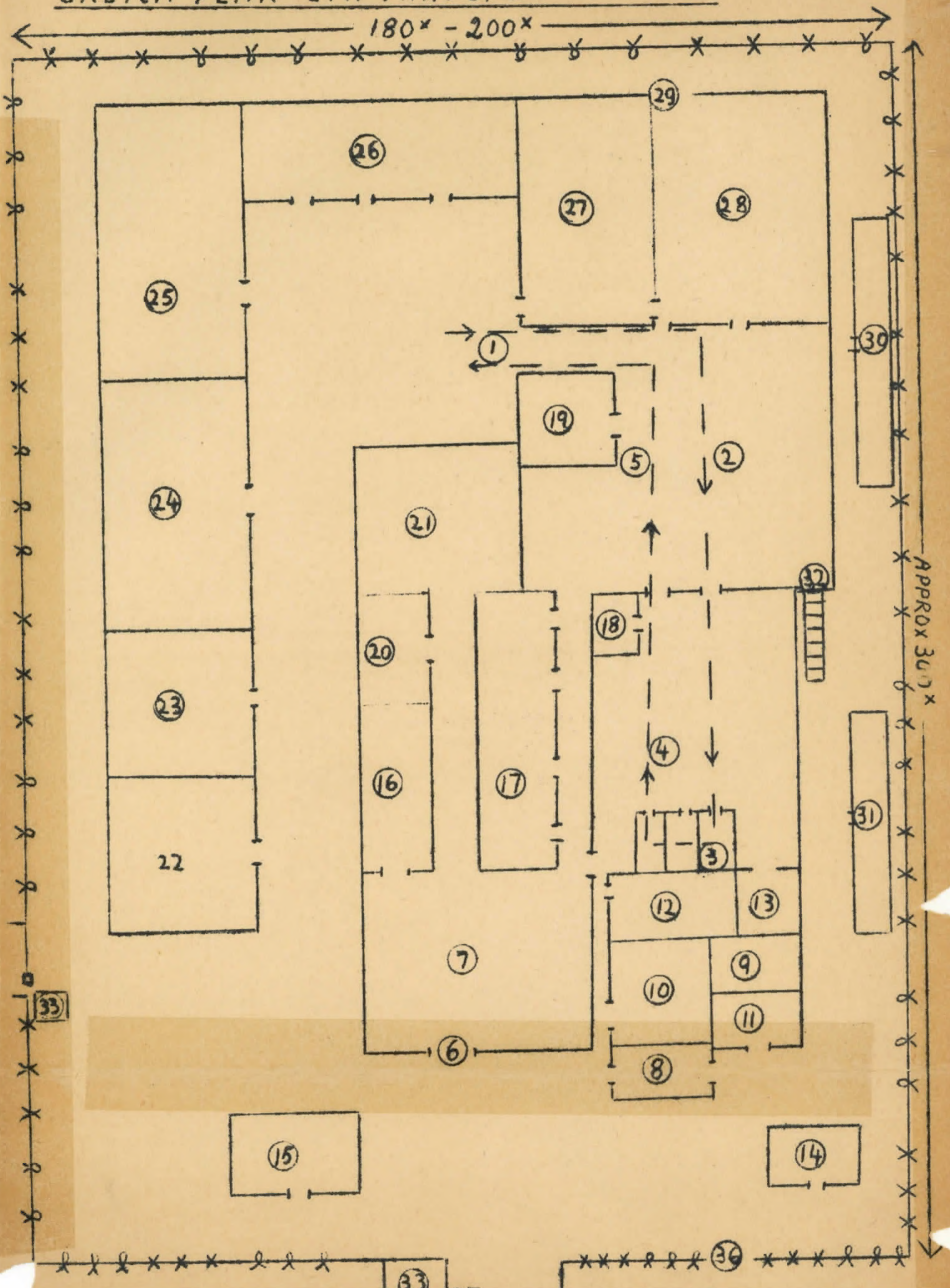
Approx 600.

The above particulars were known by DONNELL as at Spe 55 and to the best of his knowledge products are the same though exports are possibly being sent elsewhere.

~~CONFIDENTIAL~~

SKETCH PLAN EFA PHÄNOMEN WERK 3

180x - 200x



~~CONFIDENTIAL~~

LEGEND FOR SKETCH PLAN OF EFA
PHANOMEN WERK 3

- 1) MAIN WORKS entrance and exit. Truck chassis come by railway from SITTAU and are driven from BAUTZEN station to these works. They are driven in the main works entrance and go to -
- 2) Workshop for coachbuilding. Where the bodies are built onto the chassis. They then go to -
- 3) 'Paint Stalls' where the paint is sprayed on to the bodywork of the trucks. From here they go to-
- 4) Cleaning shed where the trucks (and buses) are cleaned and polished. From here they go to -
- 5) The workshop for finishing touches, i.e. number plates lights and canopies are attached to vehicles. From here they go out through Main Works Entrance (No 1) and go via railway (BAUTZEN station) to GORLITZ from where they are distributed to importing countries.
- 6) Entrance to -
- 7) Workshop where the coachbuilding and finishing of omnibuses takes place.
- 8) Works Medical Centre
- 9) Drawing and Pay Office
- 10) Dining hall
- 11) Fire department
- 12) Upholstery department (seats, canvas, canopies, etc)
- 13) Paint store
- 14) Nighwatchman's house.
- 15) Kindergarten
- 16) FDJ Workshop for practical apprentices
- 17) Painting department
- 18) Foreman's office
- 19) Tool store
- 20) Store for metals
- 21) Repairs department for factory
- 22) General Offices
- 23) Kitchen
- 24) Ruins of old dining hall, which was wrecked at the end of the war when a German aeroplane crashed into it.
- 25) Garage for works vehicles
- 26) Electricians department. All electrical work for both products, and factory is done here.
- 27) Vehicle accessories department. Here the framework for the bodies of the vehicles is made, also seats door handles, etc.
- 28) Woodwork department
- 29) Emergency door
- 30) Saw mills
- 31) Boiler house
- 32) Emergency door and fire escape
- 33) Crate control huts manned by Works police.
- 34) HUMBOLDSTR
- 35) PREUTCHWITZERSTR. Road to BAUTZEN station
- 36) Perimeter fence, 7' high wire mesh 3 strand barbed wire outward overhang. No lights. Patrolled by Works Police with dogs.

~~CONFIDENTIAL~~